

VFC3 Series

The vapor tight fixture is a cost effective and energy efficient alternative to traditional fluorescent tubes or strip light fixtures. Featuring a full-length, casketed polycarbonate lens and single piece non-corrosive polycarbonate body, this vapor tight led is protected with IP65 rating, sealed and casketed against dust, dirt, and humidity, making it ideal for both indoor and outdoor harsh environments applications, including utility lighting, parking garages, freezers and cold storage facilities, food processing, car washes, stairwell lighting and low bay lighting. Additionally, ceiling or surface mounted, this led tri proof light has an initial lumen range of 110LPW, and features 0-10V dimming standards.



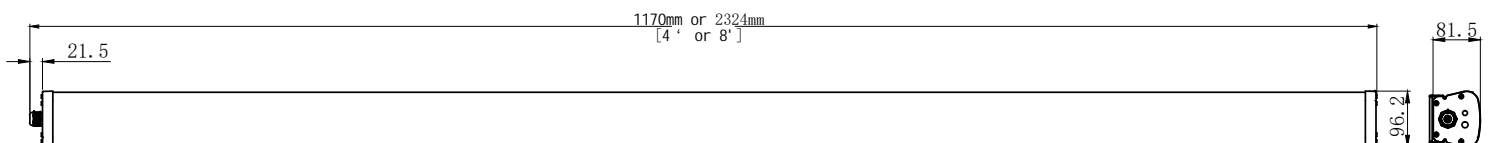
IK08

SUITABLE FOR
WET
LOCATIONS

FEATURES

- ETL listed for wet locations, IP65 rated
- 140 lumens per watt
- 3500K/4000K/5000K CCT Selectable
- 2ft/4ft/8ft available
- 0-10V dimming standard
- 100-277VAC universal voltage
- Power Selectable
- Easy connectable

DIMENSION:(mm/in)



VFC3 Series

APPLICATIONS

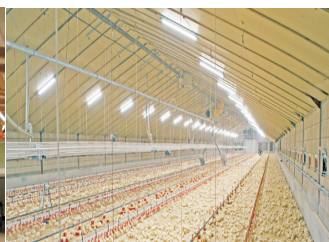
- Wet areas
- Outside walkways
- Warehouses
- Storage areas
- Industrial units
- Farm buildings (Non-corrosive atmosphere)
- Garages
- Workshops
- Car parks
- Changing rooms
- Resistant to impact and many chemical agents, but for suitability in specific environments please take specialist advice

CONSTRUCTION

- White coloured polycarbonate
- Polycarbonate diffuser integrated with powder coated lighting tray
- Stainless steel clips
- Reinforced drill points in base for direct surface fixing, or conduit suspension.
- Stainless steel surface mounting clips
- Can also be suspended from wire/chain using clips provided



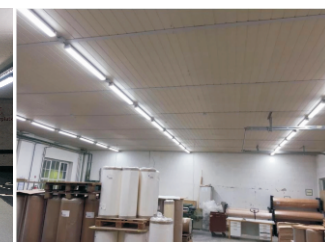
Supermarket



Farm buildings



Parking lot lighting



Warehouses

TECHNICAL SPECIFICATION

Where the first "XXX" indicate color temperature, can be any two digit plus K. The second "X" indicate diffuser type, can be F or C, F means frosted, C means clear. "P" indicate 0-10 V dimmable, "S" indicate non-dimmable. The third "XX" can be SR, EM, RM, SR means with Lighting Control, EM means with Emergency power, RM means with Lighting Control and Emergency power.

- Input Voltage : 100-277VAC
- Driver Type : UL Driver
- Luminous Efficacy : up to 110lm/w
- Colour Rendering Index : > 80Ra
- LED Type : LM80 SMD2835
- Operating : Temperature:-40°C up to 50°C (-40°F up to 122°F)
- Color Temperature : 3000K/4000K/5000K/
- Material : Polycarbonate Body & Diffuser
- Ingress Protection : IP65
- Impact Rating : IK08
- Rated Life : 50,000 hours
- Warranty : 5 years

Product Code	VFC3-XXX-XXXP
Power Consumption(W)	4':56/48/32W Selectable 8':120/96/64W Selectable
Efficacy (lm/W)	110lm/W
Beam Angle	120°
CRI	80
Power Factor	>0.9
Housing	PC
Installation	Surface Mount
Operating Temperature	-40°C up to 50°C (-40°F up to 122°F)
Certification	ETL

VFC3 Series

PACKAGING

Model No.	Pcs/Carton	Carton Dimension	N.W(kg)	G.W(kg)	CBM
KL-VFC34F	9	126*30*30.5	22.05	25.4	0.12
KL-VFC38F	6	244.5*30*22.5	21.6	26.7	0.17